

WINREVAIR TREATS PAH DIFFERENTLY:

It's the first and only activin signaling inhibitor for PAH. WINREVAIR targets an underlying disease process that causes the pulmonary arteries to become thick and narrow in patients with PAH.

Adding WINREVAIR to your current PAH medicines may help you achieve more improvements. WINREVAIR may help patients with PAH to:

- Improve their ability to exercise
- Improve their ability to perform normal activities with fewer symptoms
- Lower the chance of their PAH worsening

I showed my flowers some love
THAT'S MY WIN

WHAT'S YOUR WIN?

Ask your doctor about the possibilities for you with WINREVAIR

Actor Portrayal

WHAT IS WINREVAIR?

WINREVAIR is a prescription medicine for adults with pulmonary arterial hypertension (PAH). PAH is a type of high blood pressure in the arteries of your lungs.

WINREVAIR can improve your ability to exercise, improve your ability to perform normal activities with fewer symptoms, and reduce the risk of your physical condition and symptoms worsening.

IMPORTANT SAFETY INFORMATION

Before taking WINREVAIR and during treatment, tell your healthcare provider:

- About all of your medical conditions and all of the medicines you take, including prescriptions, over-the-counter medicines, vitamins, and herbal supplements.
- If you are pregnant, planning to get pregnant, become pregnant, or think you may be pregnant. If you are able to get pregnant, your healthcare provider should do a pregnancy test before you start taking WINREVAIR.
- If you are breastfeeding or plan to breastfeed.

If you are able to get pregnant, you should use effective birth control during treatment with WINREVAIR and for at least 4 months after your final dose. WINREVAIR may harm your unborn baby. Do not breastfeed during treatment and for 4 months after your final dose.

Please read the additional Important Safety Information on [page 9](#).

PAH affects the lungs and heart, leading to symptoms that can be felt throughout the body.

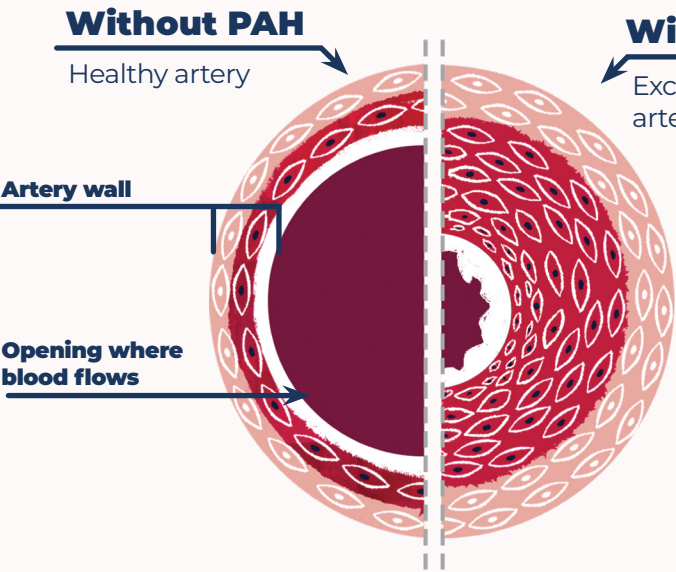
PAH is a type of high blood pressure in the pulmonary arteries (blood vessels in the lungs). The pulmonary arteries transport blood from the right side of the heart through the lungs to receive oxygen. In PAH patients, the walls of these arteries thicken, which also narrows the space where blood can flow. The right side of the heart has to work harder to pump blood through the lungs, leading to high blood pressure in the pulmonary arteries.

Over time, the right side of the heart can become weakened and lose function. As a result, less oxygen is transported throughout the body.

PAH patients may experience symptoms such as shortness of breath, dizziness, fatigue, and chest pain. Some other PAH symptoms may include cough, swelling of the lower body, or a lack of energy.

WHAT MAKES THE PULMONARY ARTERIES THICK AND NARROW?

Research shows that PAH patients have high levels of a protein called **activin** that signals new cells to form. Too much activin creates an **imbalance in signaling**, which causes cells to **multiply and build up** in the walls of the pulmonary arteries.



PULMONARY ARTERY CROSS-SECTION



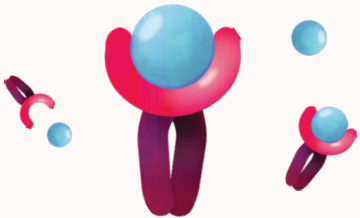
WINREVAIR targets a root cause of PAH.



Most PAH medicines work on one of three well-known treatment pathways. WINREVAIR works on a unique, fourth treatment pathway: the activin signaling pathway. WINREVAIR directly targets excess activin and blocks its signals.



WINREVAIR MOLECULE



WINREVAIR MOLECULE ATTACHING TO ACTIVIN

By blocking excess activin signals, WINREVAIR helps control cell growth.

WINREVAIR IMPROVES THE BALANCE IN SIGNALING



IMPORTANT SAFETY INFORMATION (CONTINUED)

WINREVAIR may cause serious side effects including:

- **High level of hemoglobin in your blood.** Hemoglobin is a protein in red blood cells that carries oxygen. High levels of hemoglobin can increase your risk for blood clots.
- **Severely low number of platelets in your blood.** Platelets are blood cells that help blood clot. Tell your healthcare provider if you develop easy bruising or bleeding, bleeding that does not stop, or nosebleeds.
- **Serious bleeding.** Tell your healthcare provider if you develop any signs or symptoms of bleeding, including: vomiting blood or your vomit looks like coffee-grounds, pink or brown urine, red or black stools that look like tar, coughing up blood or blood clots, persistent headaches, nausea, dizziness or feeling weak, persistent abdominal cramps, severe back pain, abnormally heavy menstrual bleeding.
- **Decreased fertility:** WINREVAIR may affect female and male fertility, which may affect your ability to have children. Talk to your healthcare provider if this is a concern for you.

Please read the additional Important Safety Information on [page 9](#).

WINREVAIR[™]

(sotatercept-csrk) for injection
45 mg, 60 mg

WINREVAIR was studied in a 6-month clinical trial called STELLAR.

In STELLAR, 323 adults with PAH (WHO Group 1, functional class II or III) added either WINREVAIR or placebo to the PAH medicines they were already taking.

- 163 patients added WINREVAIR
- 160 patients added placebo

Functional classes are defined by the World Health Organization (WHO).

WINREVAIR and placebo were given as injections under the skin (subcutaneously) once every 3 weeks.

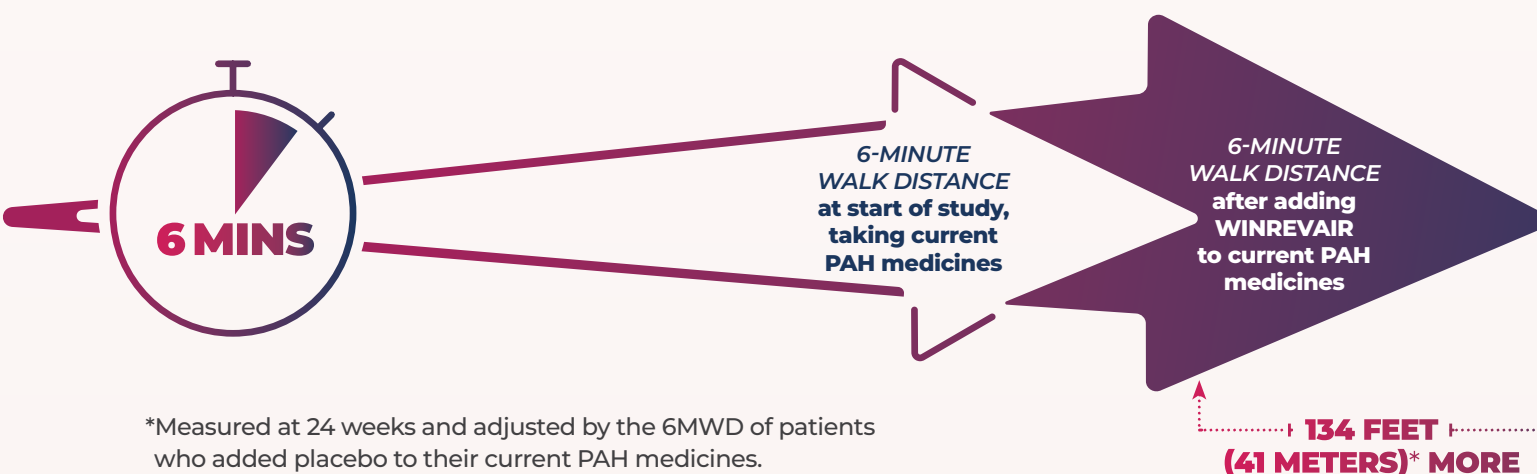
Almost all patients in the trial (96%) were already taking 2 or 3 PAH medicines before adding WINREVAIR or placebo.

I finished my favorite trail
THAT'S MY WIN

Actor Portrayal

With WINREVAIR, you could improve your ability to exercise.

In STELLAR, adults with PAH who added WINREVAIR increased their 6-minute walk distance (6MWD) by approximately 134 feet (41 meters), compared to their 6-minute walk distance at the start of the study.*



WINREVAIR could keep your PAH from getting worse.

Adding WINREVAIR to current medicines reduced the risk of death or a PAH worsening event[†] by 84%, compared to current PAH medicines plus placebo.

84% LOWER RISK OF DEATH OR PAH WORSENING[†]

In STELLAR, 9 out of 163 WINREVAIR patients (5.5%) experienced a PAH worsening event[†] or death, compared to 42 out of 160 patients (26.3%) taking their current medicines plus placebo. These events were recorded over a median period of 33.6 weeks.

[†]PAH worsening was defined as being listed for a lung and/or heart transplant; needing PAH rescue therapy or an increase in the dose of prostacyclin infusion therapy of 10% or more; needing an atrial septostomy (a procedure to manage right heart failure); hospitalization for PAH of 24 hours or more; or the combination of a worsening of functional class and a decrease in 6MWD of 15% or more, confirmed by two 6MWD tests at least 4 hours apart but no more than 1 week.

I saw the winning goal
THAT'S MY WIN

Actor Portrayal

IMPORTANT SAFETY INFORMATION (CONTINUED)

Your healthcare provider will do a **blood test** before your first 5 doses of WINREVAIR, longer if needed, and then from time to time to check your levels of hemoglobin and platelets.

The most common side effects of WINREVAIR include headache, nose bleeds, rash, tiny blood vessels that look like pink or red lines on the skin (spider veins), diarrhea, dizziness, and redness.

These are not all the possible side effects of WINREVAIR. Call your doctor for medical advice about side effects.

Please read the additional Important Safety Information on [page 9](#).

> What could your days be like if you had fewer PAH symptoms?

With WINREVAIR, you could improve your ability to do normal activities with fewer PAH symptoms.

2X MORE WINREVAIR patients improved in functional class

In STELLAR, at 24 weeks, 29% of the adults with PAH who added WINREVAIR improved by at least 1 functional class, compared to 14% of patients who added placebo to their current PAH medicines.

At the start, all STELLAR patients were in functional class II (49%) or III (51%), meaning that the above PAH symptoms caused minor (for class II) or major (for class III) limitations to ordinary physical activity.



I danced with the birthday girl
THAT'S MY WIN

Actor Portrayal

IMPROVEMENT IN FUNCTIONAL CLASS MEANS BEING PHYSICALLY ACTIVE WITH FEWER LIMITATIONS FROM PAH SYMPTOMS, INCLUDING:



**SHORTNESS
OF BREATH**



**FEELING
TIRED**



**FEELING
LIGHTEADED**



**CHEST
PAIN**

> WINREVAIR could improve important measures of heart health and function that help your doctor monitor your PAH.

In STELLAR, adults with PAH who added WINREVAIR experienced significant improvement in PVR* and NT-proBNP[†] levels.

	PVR	WHAT IS IT? Amount of resistance to blood flow in the lungs	WHICH TEST? Right-sided heart catheterization
	NT-proBNP	WHAT IS IT? A protein that helps check for stress on the heart	WHICH TEST? Blood test

PVR = Pulmonary vascular resistance.
NT-proBNP = N-terminal pro-B-type natriuretic peptide.

YOUR PAH CARE TEAM MAY EVALUATE PVR AND NT-proBNP ALONG WITH OTHER TESTS TO GET A MORE COMPLETE PICTURE OF YOUR HEART HEALTH AND FUNCTION.

*Adding WINREVAIR reduced PVR by 235 dynes*sec/cm⁵ (units of resistance) compared to current PAH medicines plus placebo.

[†]Adding WINREVAIR reduced levels of NT-proBNP by 442 pg/mL compared to current PAH medicines plus placebo.



Actor Portrayal

I finally visited the big city
THAT'S MY WIN

IMPORTANT SAFETY INFORMATION (CONTINUED)

Taking WINREVAIR:

- If your healthcare provider decides that you or a caregiver can give WINREVAIR at home, do not try to inject WINREVAIR until you or a caregiver have received training from your healthcare provider on the right way to prepare and inject the medicine.
- Your healthcare provider may delay treatment or change your dose if needed, based on the results of your blood tests to check your hemoglobin and platelet levels.
- See the detailed "Instructions for Use" booklet that comes with WINREVAIR for information on how to prepare and inject a dose of WINREVAIR.

Please read the additional Important Safety Information on [page 9](#).

> PAH patients are talking about more possibilities with WINREVAIR.



DIANE, 55

WAS DIAGNOSED WITH PAH 9 YEARS AGO. SHE'S A FORMER ELEMENTARY SCHOOL PRINCIPAL AND A NEW GRANDMOTHER.

Diane is taking 2 pills for PAH, and they have helped a lot. At her last visit, Diane's doctor said her PAH was stable, and they discussed not adding any more medicines until her symptoms worsened. But Diane is determined to be proactive in managing her disease – so, when she heard about WINREVAIR in her PAH support group, she asked her doctor what WINREVAIR could do to slow down her disease worsening.

Talk to your doctor about how WINREVAIR could help you achieve your treatment goals.

TERESA, 40

WAS DIAGNOSED WITH PAH 3 YEARS AGO. SHE'S A SOCIAL WORKER AND A MUSICIAN IN A LOCAL ORCHESTRA.

Teresa and her doctor tried several different PAH medicines to find the right treatment combination. She has experienced some benefit, yet her PAH symptoms still keep her from being as active as she would like to be. When her doctor first suggested adding WINREVAIR to her treatment plan, Teresa was nervous about the idea of changing her medication routine. But her doctor explained that WINREVAIR could help improve her ability to exercise and help improve her ability to do normal activities with fewer symptoms. Also, she would take it as a shot once every three weeks. Together, Teresa and her doctor decided that WINREVAIR could be a good option for her.



> WHAT IS WINREVAIR?

WINREVAIR is a prescription medicine for adults with pulmonary arterial hypertension (PAH). PAH is a type of high blood pressure in the arteries of your lungs.

WINREVAIR can improve your ability to exercise, improve your ability to perform normal activities with fewer symptoms, and reduce the risk of your physical condition and symptoms worsening.

> IMPORTANT SAFETY INFORMATION

Before taking WINREVAIR and during treatment, tell your healthcare provider:

- About all of your medical conditions and all of the medicines you take, including prescriptions, over-the-counter medicines, vitamins, and herbal supplements.
- If you are pregnant, planning to get pregnant, become pregnant, or think you may be pregnant. If you are able to get pregnant, your healthcare provider should do a pregnancy test before you start taking WINREVAIR.
- If you are breastfeeding or plan to breastfeed.

If you are able to get pregnant, you should use effective birth control during treatment with WINREVAIR and for at least 4 months after your final dose. WINREVAIR may harm your unborn baby. Do not breastfeed during treatment and for 4 months after your final dose.

WINREVAIR may cause serious side effects including:

- **High level of hemoglobin in your blood.** Hemoglobin is a protein in red blood cells that carries oxygen. High levels of hemoglobin can increase your risk for blood clots.
- **Severely low number of platelets in your blood.** Platelets are blood cells that help blood clot. Tell your healthcare provider if you develop easy bruising or bleeding, bleeding that does not stop, or nosebleeds.
- **Serious bleeding.** Tell your healthcare provider if you develop any signs or symptoms of bleeding, including: vomiting blood or your vomit looks like coffee-grounds, pink or brown urine, red or black stools that look like tar, coughing up blood or blood clots, persistent headaches, nausea, dizziness or feeling weak, persistent abdominal cramps, severe back pain, abnormally heavy menstrual bleeding.
- **Decreased fertility:** WINREVAIR may affect female and male fertility, which may affect your ability to have children. Talk to your healthcare provider if this is a concern for you.

Your healthcare provider will do a **blood test** before your first 5 doses of WINREVAIR, longer if needed, and then from time to time to check your levels of hemoglobin and platelets.

The most common side effects of WINREVAIR include headache, nose bleeds, rash, tiny blood vessels that look like pink or red lines on the skin (spider veins), diarrhea, dizziness, and redness.

These are not all the possible side effects of WINREVAIR. Call your doctor for medical advice about side effects.

Taking WINREVAIR:

- If your healthcare provider decides that you or a caregiver can give WINREVAIR at home, do not try to inject WINREVAIR until you or a caregiver have received training from your healthcare provider on the right way to prepare and inject the medicine.
- Your healthcare provider may delay treatment or change your dose if needed, based on the results of your blood tests to check your hemoglobin and platelet levels.
- See the detailed "Instructions for Use" booklet that comes with WINREVAIR for information on how to prepare and inject a dose of WINREVAIR.

Please read the [Patient Information](#) and [Instructions for Use \(1-vial kit, 2-vial kit\)](#) for WINREVAIR and discuss them with your doctor. The physician [Prescribing Information](#) also is available.

> What should I know about taking WINREVAIR?



Training

- If your doctor decides that you or a caregiver can give your WINREVAIR shots at home, your care team will train you on the right way to prepare and inject WINREVAIR.
- Do not try to inject WINREVAIR until your team has shown you how to inject and you feel comfortable doing so.



Blood Tests

- You'll take blood tests before your first 5 doses of WINREVAIR, possibly longer, depending on what your doctor decides.
- These tests are to check your levels of hemoglobin (a protein in red blood cells) and platelets (blood cells that help blood clot).
- After each of these blood tests, your doctor may delay treatment or change your dose if needed.



Actor Portrayal

WINREVAIR[™]
(sotatercept-csrk) for injection
45 mg, 60 mg

Please read the additional Important Safety Information on [page 9](#).



WINREVAIR is a single shot every 3 weeks — it is not a daily medicine.



How will I take WINREVAIR?

If your doctor decides that you or a caregiver can inject **WINREVAIR** at home, you'll receive training. Then, you'll follow these steps every 3 weeks:



STORE

your full WINREVAIR injection kit in the refrigerator until you're ready to take your dose



MIX

the powdered medicine into liquid form, following the Instructions for Use



INJECT

your prescribed dose in your stomach at least 2 inches away from the belly button, or your upper thigh, just under the skin.

You should inject WINREVAIR right away after mixing the medicine powder with the sterile water for injection, but no later than 4 hours after mixing

Read the detailed Instructions for Use booklet that comes with WINREVAIR for information on how to prepare and inject your dose.



Actor Portrayal



WINREVAIR[™]

(sotatercept-csrk) for injection
45 mg, 60 mg

Start the conversation with your doctor about **WINREVAIR** today.

TO LEARN MORE, VISIT [WINREVAIR.COM](https://www.winrevair.com)

WHAT IS WINREVAIR?

WINREVAIR is used to treat adults with pulmonary arterial hypertension (PAH).

WINREVAIR can improve your ability to exercise, improve your ability to perform normal activities with fewer symptoms, and reduce the risk of your physical condition and symptoms worsening.

IMPORTANT SAFETY INFORMATION

Before taking WINREVAIR and during treatment, tell your healthcare provider:

- About all of your medical conditions and all of the medicines you take, including prescriptions, over-the-counter medicines, vitamins, and herbal supplements.
- If you are pregnant, planning to get pregnant, become pregnant, or think you may be pregnant. If you are able to get pregnant, your healthcare provider should do a pregnancy test before you start taking WINREVAIR.
- If you are breastfeeding or plan to breastfeed.

If you are able to get pregnant, you should use effective birth control during treatment with WINREVAIR and for at least 4 months after your final dose. WINREVAIR may harm your unborn baby. Do not breastfeed during treatment and for 4 months after your final dose.

Please read the additional Important Safety Information on [page 9](#) and the [Patient Information and Instructions for Use](#) (1-vial kit, 2-vial kit) for WINREVAIR, and discuss them with your doctor. The physician [Prescribing Information](#) also is available.